



IOWA
FOOTBALL
SOUVENIR
1907

The State University of Iowa

Iowa City, Iowa

The University Comprises the Following Colleges and Schools:

THE GRADUATE COLLEGE

Ph. D. Large facilities for advanced work in nearly thirty departments. Degrees of M. A., M. S.,

THE COLLEGE OF LIBERAL ARTS

Upwards of twenty departments; three hundred courses; broadly elective. Degrees of B. A. and B. S. Combined courses with Colleges of Law, Medicine, and Dentistry save time. Students with degree of B. D. admitted to sophomore rank; with degree of M. D. to junior rank. Includes

The School of Political and Social Science

Emphasizes the departments of History, Political Economy and Sociology, including commerce and political science. Also

The School of Education

Standards for (1) a liberal education, (2) mastery of some subject or subjects, (3) professional education; combines work from all departments.

THE SUMMER SESSION

Undergraduate and graduate courses with full University credit. Includes

The Summer School of Library Training

Under the auspices of the Iowa Library Commission

THE COLLEGE OF APPLIED SCIENCES

Courses in Civil, Sanitary, Mechanical, Electrical, Chemical, and Forest Engineering, Chemistry and special items. Degree of B. S., C. E., etc.

THE COLLEGE OF LAW

Three-years course; "case method;" resident professors. Degree of LL. B. Combined course gives degrees of B. A. and LL. B.

THE COLLEGE OF MEDICINE

Four-years course; abundant laboratory and clinical material. Degree of M. D. Combined course gives degrees of B. S. and M. D. Includes

The School for Nurses

Three-years course; certificate of trained nurse.

See under College of Medicine. Includes also

The School for Nurses

THE COLLEGE OF DENTISTRY

Three-years course. Degree of D. D. S. Special courses for practitioners and dental assistants. Combined course gives degree of B. S. and D. D. S.

THE COLLEGE OF PHARMACY

Course of two years, degree of Ph. G.; course of three years, degree of Ph. C., elective work for practitioners.

SCHOOL OF MUSIC (affiliated)

Offers instruction of highest grade in voice, pianoforte, pipe-organ, orchestral and band instruments, and public school music.

The special announcement of any School or College will be sent, free of charge, upon application to
GEORGE E. MACLEAN, President.

Football Souvenir

Published by the

Board in Control of Athletics

The State University of Iowa

Iowa's Games 1906

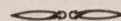
Oct. 27—	Iowa 26	Missouri	4
Nov. 3—	Iowa 4	Wisconsin	18
Nov. 10—	Iowa 15	Coe	12
Nov. 17—	Iowa 11	Alumni	0
Nov. 23—	Iowa 0	Ames	2
Nov. 29—	Iowa 0	St. Louis	39



Iowa's Games 1907

Oct. 12—	Iowa 9	Alumni	0
Oct. 19—	Iowa 21	Missouri	6
Oct. 26—	Iowa 25	Drake	4
Nov. 2—	Iowa	Wisconsin	
Nov. 9—	Iowa	Illinois	
Nov. 23—	Iowa	Ames	

Nine RaHS for the Team!

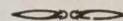


Who—Wah—Wah!

Who—Wah—Wah!

Iowa—Iowa!

Who—Wah—Wah!



Who—Rah—Who—Ray!

I--O--W--A

Who—Rah—Who—Ray!

Varsity! Varsity! Iowa!

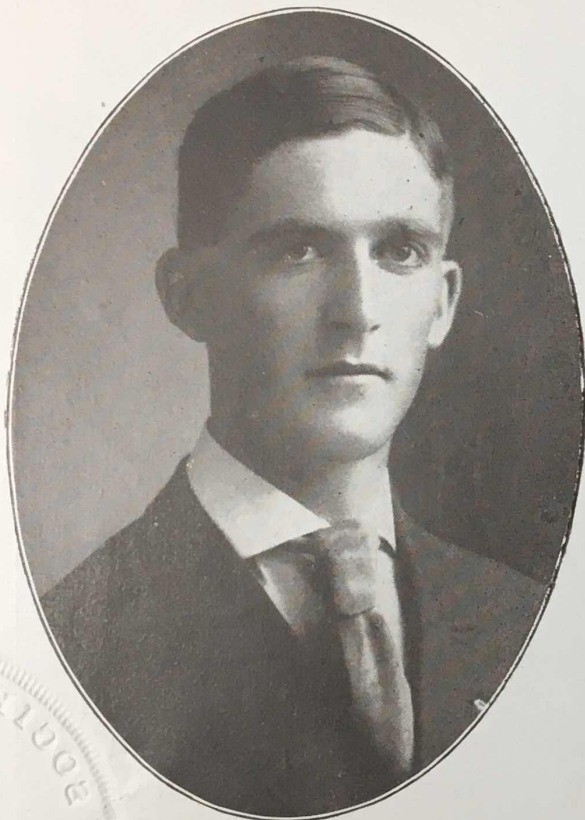


THE IOWA TEAM

p. 9886

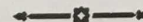
16 RP.08

UNIVERSITY OF IOWA



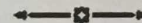
MARC CATLIN
Director of Physical Training and Athletics

Board in Control of Athletics.



FACULTY MEMBERS

Arthur G. Smith	L. M. Byers
Wilber J. Teeters	S. H. Bush
Dr. Clarence Van Epps	Marc Catlin



STUDENT MEMBERS

C. N. Kirk	I. C. Hastings	R. E. Miller
R. A. White	Polk Smith	



ALUMNI MEMBERS

Walter M. Davis, Iowa City
W. H. Bremner, Des Moines



JOHN GRIFFITH, Assistant Coach



MAURICE KENT
Freshmen Coach



R. A. WHITE, Right End
Captain



C. N. KIRK, Right Half



I. C. HASTINGS, Center



WALTER STEWART, Quarter



F. A. BRUGEMAN, Half Back



A. E. SEIDEL, Left Guard



CARL E. FRITZEL, Tackle



W. E. CARBERRY, Left End



E. G. ELLIOTT, Guard



WILL P. KNOWLTON, Left Half



R. E. MILLER, Halfback



J. J. JEWELL, Left Tackle



E. G. CONNOR, Tackle.



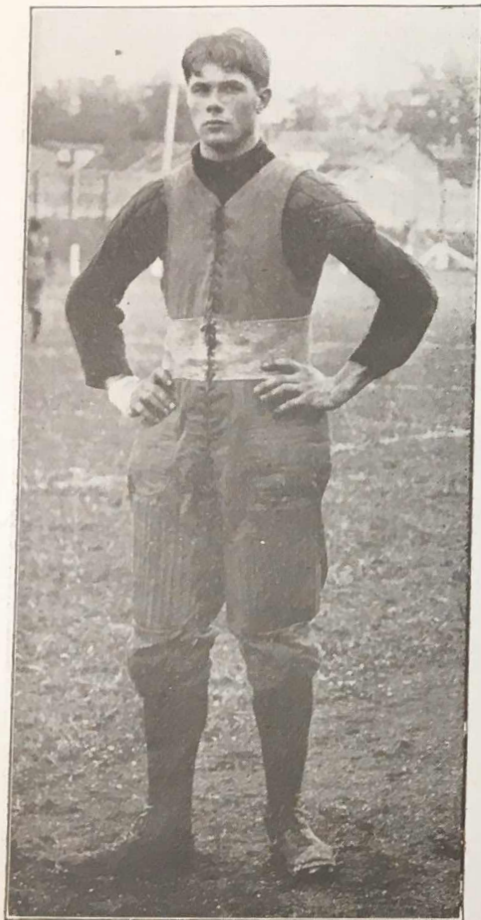
H. C. MYERS, Guard



J. W. COBURN, End



B. V. MURPHY, Halfback



LE ROY A. HAMMER, Full Back



C. M. HAZARD, Full Back



R. H. COMLY, Center



R. H. GROSS, Right Tackle



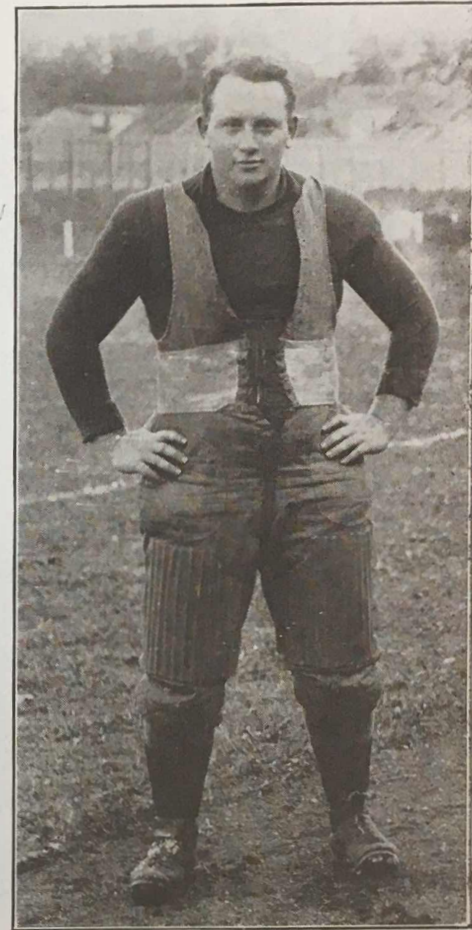
I. E. STUTSMAN, Tackle



BURR BROWN, Quarter



P. W. NEWMAN, End



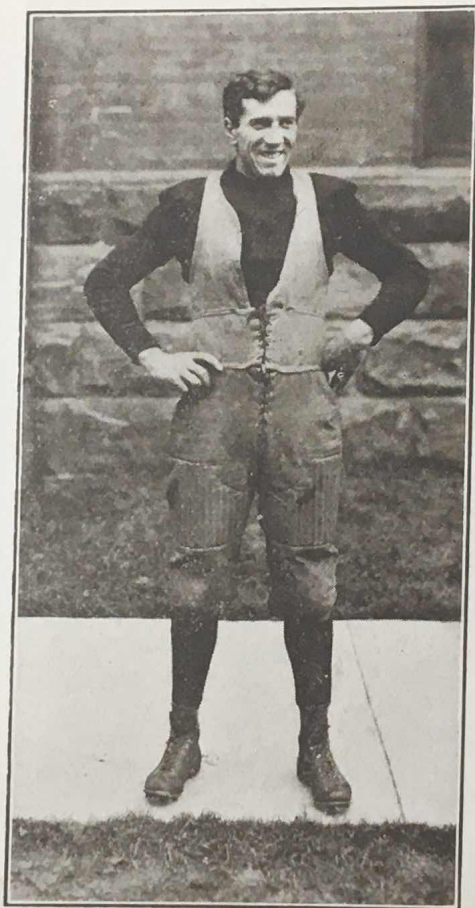
P. S. ST. CLAIR, Guard



ON THE IOWA FIELD

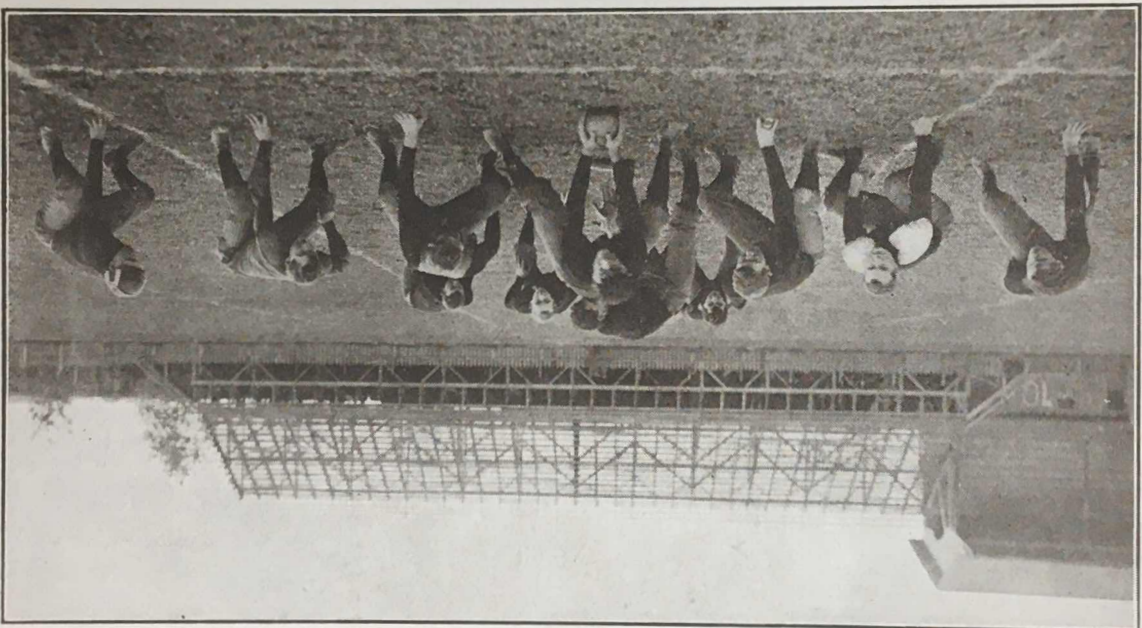


ATHLETIC PAVILION AND ARMORY



CAPTAIN MESSMER, of Wisconsin

WISCONSIN TEAM





GEORGE E. MACLEAN
President of The State University of Iowa



THE "OLD CAPITAL"
Now occupied by the College of Law and offices of Administration



HALL OF LIBERAL ARTS



NEW SCIENCE HALL



FRESHMAN TEAM, 1907

Kent, Coach
Thomas
Bell

Collins
Tiernan
Weeks

Dean
Abrams
Thornburg

Boggs
Spannum
Brock

Williams

Brown
Hyland

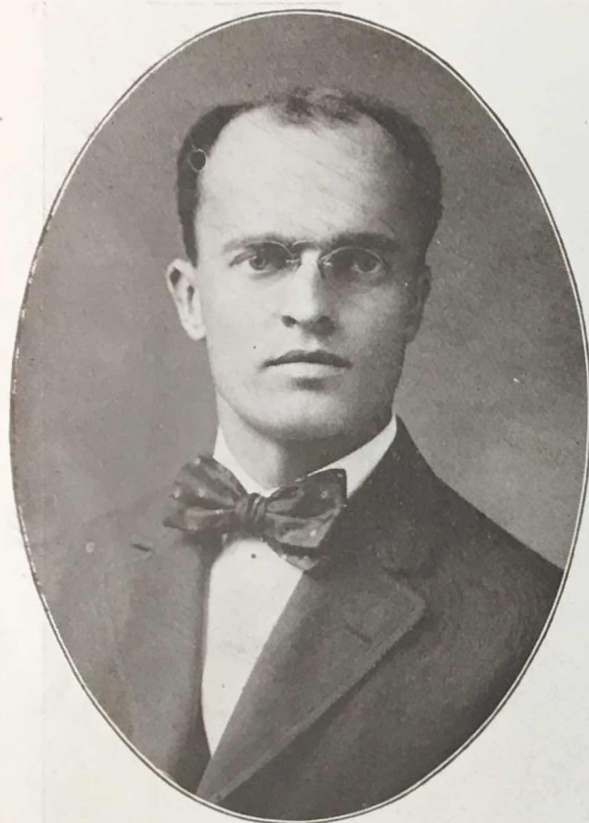
Hospers

Clarkson

Klein
Whaley



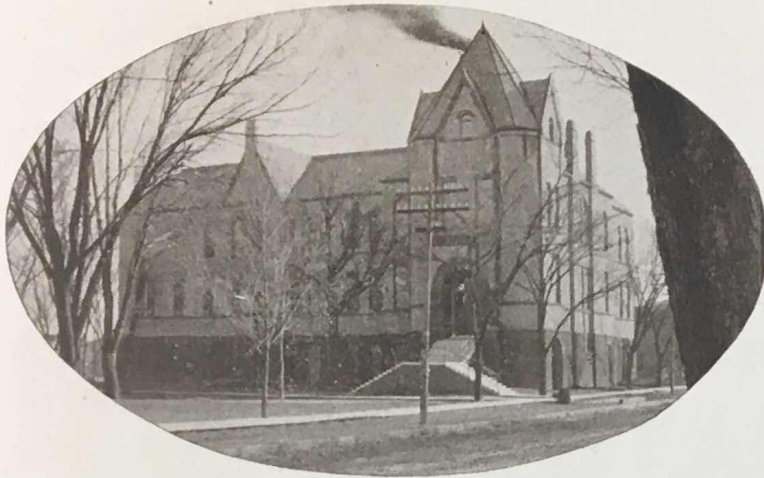
BATTALION BAND



E. G. SCHROEDER
Assistant Instructor in charge of
Gymnastics



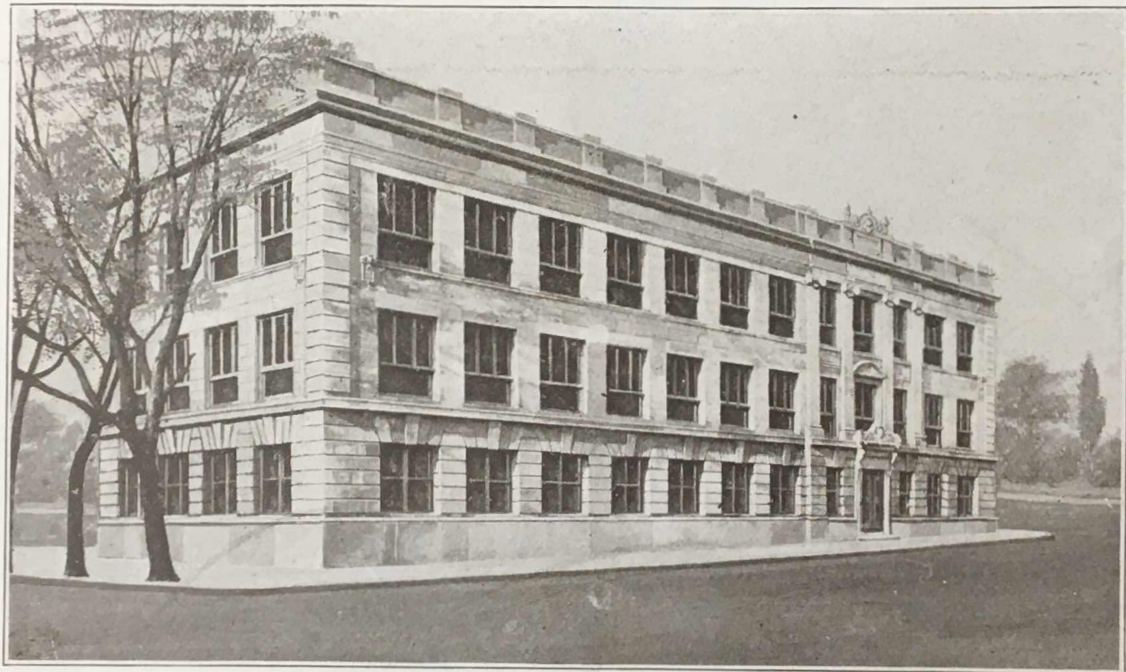
ALICE WILKINSON
Assistant Instructor Physical Training
for Women



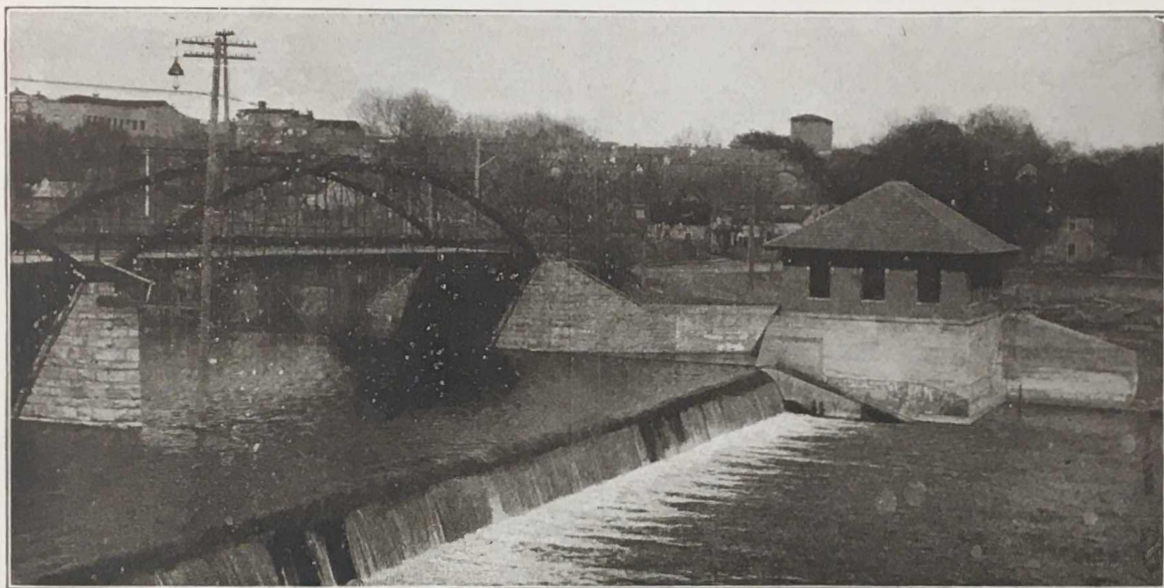
HALL OF PHARMACY AND CHEMISTRY



HALL OF DENTISTRY



MEDICAL LABORATORY



UNIVERSITY POWER DAM
Of The College of Engineering

OLD GOLD

O, Iowa, calm and secure on thy hill,
Looking down on the river below,
With a dignity born of the dominant will
Of the men that have lived long ago,
O, heir of the glory of pioneer days,
Let thy spirit be proud as of old,
For thou shalt find blessing and honor and praise
In the daughters and sons of Old Gold.

We shall sing and be glad with the days as they fly,
In the time that we spend in thy halls,
And in sadness we'll part when the days have gone by
And our paths turn away from thy walls;
Till the waters no more in thy rivers shall run,
Till the stars in the heavens grow cold,
We shall sing of the glory and fame thou hast won,
And the love that we bear for Old Gold.

OLD IOWA'S GOING TO WIN

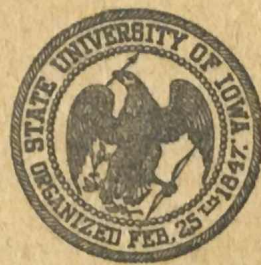
(Tune: Boola Song)

Old Iowa's going to win today.
Old Iowa's going to win.
Old Iowa's going to win today.
Oh, Iowa sure must win!
Then we'll cheer for old Iowa,
Our Iowa, dear Iowa,
And we'll cheer for old Iowa,
Dear Iowa. Who-wah-wah!

For then we'll ramble, we'll ramble,
We'll ramble through the line
First down every time,
And then we'll ramble, we'll ramble;
The way we'll beat the—— will be fine,
Rah! Rah!

Guests who desire to visit the various buildings of the University and to examine the museums, laboratories, libraries, etc., are invited to call at the office of the Registrar, 103 Old Capitol, where they will be supplied with guides. Parties will be conducted from the Old Capitol at 11:00 a. m. and at 4:30 p. m.

Addresses of students and members of the faculty can be obtained at the Registrar's office.



WEBBER PRINT CO., IOWA CITY, IOWA